

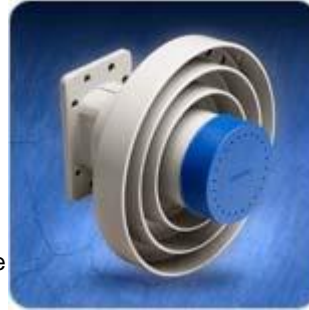


Super Feed

Description

The Chaparral Super Feed is a single polarity C-Band feedhorn for reception of linear polarized signals in the 3.7 to 4.2 GHz bandwidth. Superior quality, excellent illumination patterns and a compact design make the Super Feed the ideal choice in feedhorns for single polarity systems.

Chaparral's Super Feed features chip-resistant powder paint and cast aluminum construction for added protection against the environment. Built in the Chaparral tradition of quality, the Super Feed is the ideal choice for reliable performance.



Applications

- Single Polarity Satellite Systems

Features

- Made in the USA
- Mounts to all Standard Prime Focus Satellite Dishes
- Cast Aluminum Construction
- Chip-Resistant Polyurethane Powder Coating
- Two Year Warranty

Specifications

Part Number	0081
C-Band Frequency Range	3.7-4.2 GHz
f/D Range	.33 to .45
Cross Pol. Isolation	25 dB minimum
VSWR	1.3: 1 in both bands
Output Ports WR	229 compatible
Temperature Range	-40° C to 60° C
Size	6.5" diameter x 4.5" height
Weight	1.43 lbs.